

Broadband Directional Antenna

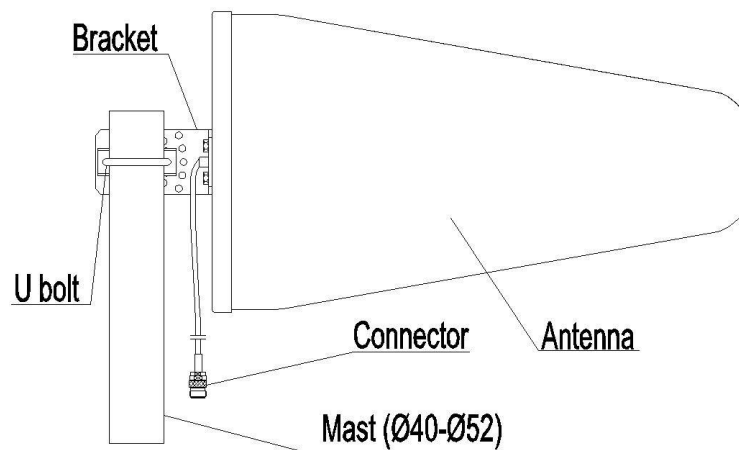
Part Number: VTBDA-698-3800-1



Features

- GSM/CDMA/WLAN/3G/4G/5G
- Wide band with coverage of common systems 698-960/1710-2700/3300-3800 MHz.
- Light weight and small size.
- UV Stable HIPS radome .

1.Installation Sketch



Note:When installing, you should let the side with a little hole face down to prevent the antenna radome from water.

2. Electrical Characteristic

No.	Item	Specifications		
1	Frequency (MHz)	698~960	1710~2700	3300~3800
2	Polarization	Vertical		
3	Gain (dBi)	9±1	9±1	9±1
4	Hor. Beam width (°)	85±15	80±15	75±15
5	Ver. Beam width (°) (Typical value)	60	65	60
6	VSWR	≤1.5		
7	Front-to-back ratio (dB)	≥15		
8	Impedance (Ω)	50		
9	Intermodulation IM3 (2×33dBm carrier))	≤-140dBc		
10	Maximum power (W)	50		

3. Mechanical Characteristic

No.	Item	Specification
1	Connector	N Female or customized
2	Height/width/depth (mm)	(512×210×64) ±1.5
3	Weight (kg)	1 (Include bracket)
4	Radome material	HIPS
5	Radome color	White
6	Mounting	Mast
7	Operating temperature (°C)	-40~60
8	Application	outdoor