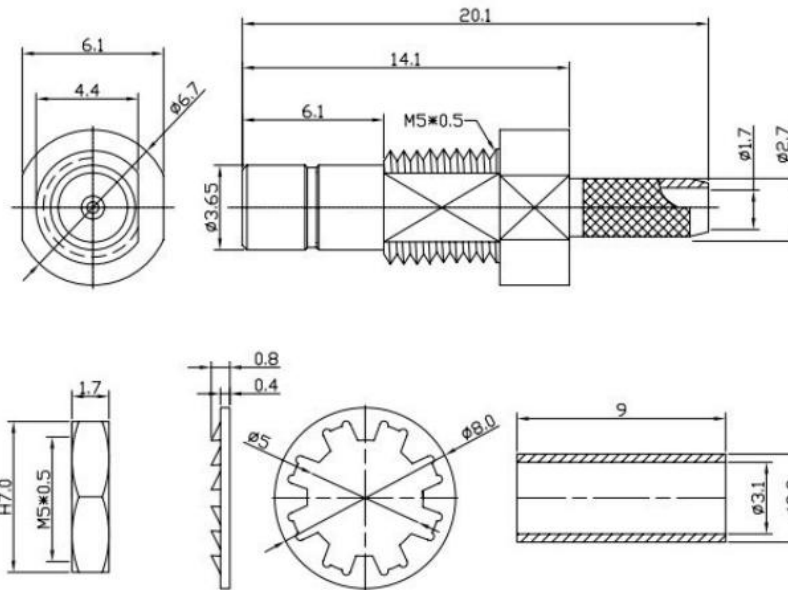


ROHS

SIGN	DATE	DESCRIPTION	APPROVER
△			
△			
△			



1. MATERIAL
 - 1.1 INSULATOR:TEFLON.
 - 1.2 ASSEM.BODY:BRASS.
 - 1.3 PIN:BRASS
 - 1.4 FERRULE:BRASS.
 - 1.5 WASHER:SPCC.
 - 1.6 NUT:BRASS.
2. FINISH
 - 2.1 PIN :SEE TABLE.
 - 2.2 BODY:SEE TABLE.
 - 2.3 FERRULE:NI PLATED.
 - 2.4 WASHER AND NUT: G/F PLATED.
- 3.ELECTRICAL CHARACTERISTICS
 - 3.1 WORKING VOLTAGE: AC 250V.
 - 3.2 WITHSTAND VOLTAGE:750Vrms.
 - 3.3 INSULATION RESISTANCE: 1,000M OHM MIN.
 - 3.4 IMPEDEANCE:50 OHM.
- 4.ENVIRONMENTAL
 - 4.1 WORKING TEMPERATURE: -55°C~+155°C.
 - 4.2 RELATIVE HUMIDITY:MAX 95%(40°C±2°C) :2°C

RECOMMEND CUTTING DIM OF CABLE

V. TORCH

DRG No: VT-SMB1-1							
APPROVED BY	CHECKED BY	DESIGNED BY				PCS	1 ROHS
Zuo Fei 2012/06/18	An li hua 2012/06/18	Cai Chuang 2012/06/18	NO.	Part Number	Description	UNIT	Q'TY