

2.4GHz Wall Mount Antenna

VT2.4G-WMA-1



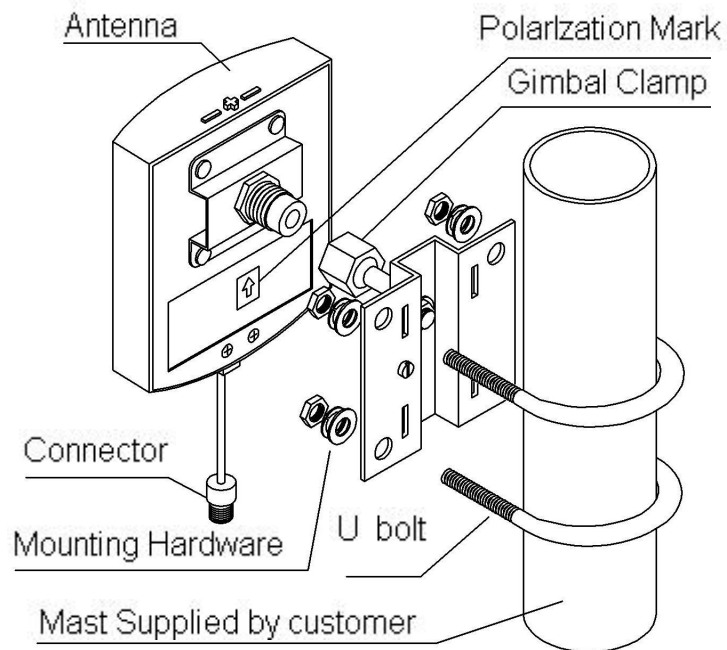
Applications:

- 2.4GHz Wlan,Wifi System
- 2.4GHz ISM band
- Indoor Coverage
- Point to Point or Point to Multipoint

Features:

- Low VSWR
- Compact Size, Good Appearance
- All Weather Operation
- Designed by Broadband Technology

1.Installation Sketch



2. Electrical Characteristics、

No.	Item	Specifications
1	Frequency Range-MHz	2400 to 2483Mhz
2	Bandwidth	83Mhz
3	Gain-dBi	8.5
4	Vertical Beamwidth-°	60
5	Horizontal Beamwidth-°	80
6	F/B Ratio-dB	≥20
7	VSWR	≤1.5
8	Impedance	50 Ω
9	Polarization	Vertical
10	Max power	50W

3. Mechanical Characteristics

No.	Item	Specification
1	Cable	---
2	Connector	N female
3	Size	125*97*30mm
4	Weight-g	210
5	Operation temperature-°C	-40~60
6	Pole Diameter-mm	40~50