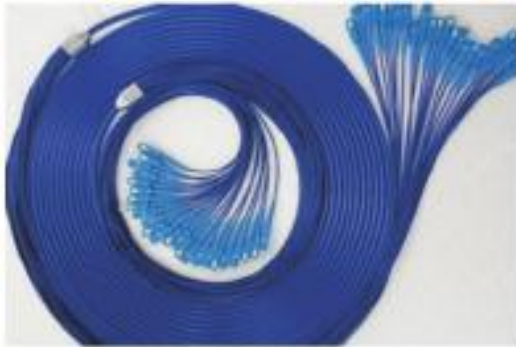


Multi Core Patch Cord

Description:

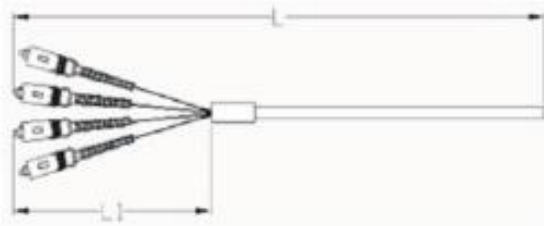
Optical fiber jumper is widely used in FTTH,WAN,and integrated routing field.V.TORCH is a professional manufacturer engaged in passive optical components .
We are committed to provide the excellent products to customers.

Bundle Patch Cord:



Features:

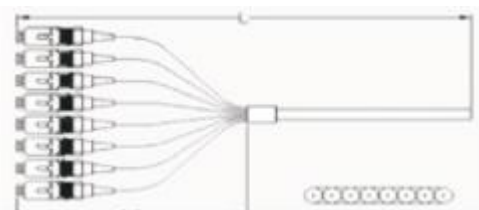
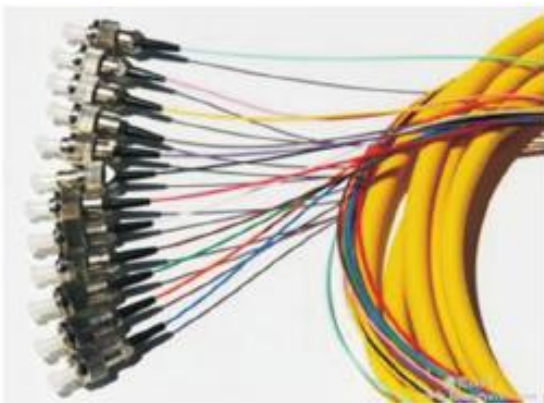
- 1.Match IEC61754,IEC61755&GR-1435-CORE
- 2.100% performance testing&excellent Geometry parameter of face and core loss
- 3.Low insertion loss and high return loss
- 4.ROHS compliant
- 5.Complete range



Application:

- 1.High density cable wiring system
- 2.High efficiency cable wiring system
- 3.Connection of trunk lines
- 4.High integrated equipment and devices

Ribbon Patch Cord:



Parameter:

Name	Units	Values		
Connector	/	FC,SC,ST,LC,MU,SMA		
Mode	/	SM		MM
surface	dB	UPC	APC	PC
Insertion Loss	dB	0.25	0.3	0.2
Return loss	dB	≥50	≥65	≥35
Core Qty.	/	4,6,8,12,24,48,96&128fibers		
Vibration	dB	≤0.2(5~50Hz,Amplitude:1.5mm)		
TDL	dB	≤0.2(-40~85℃,21cycles)		
Fiber Type	/	SM:OS1,OS2	MM:OM1,OM2,OM3,OM4	
Storage temperature	℃	-40~+85		