

Panel Antenna

VTRFID-PA-2



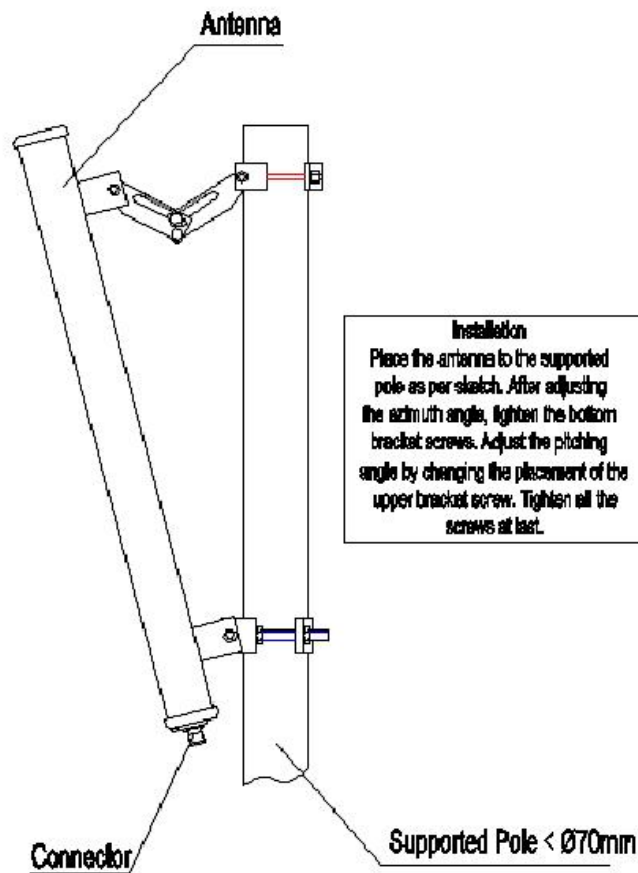
Applications

- RFID System

Features:

- 90° Beam-Width
- DC Grounded
- All Weather Operation
- Integral N Female Connector

1. Installation Sketch



2. Electrical Characteristic

No.	Item	Specifications
1	Frequency Range-MHz	902-928MHZ
2	Beamwidth-°	E:6.5 H:90
3	Gain-dBi	17
4	F/B Ratio-dB	≥20
5	VSWR	≤1.5
6	Impedance	50 Ω
7	Polarization	Vertical
8	Max power	100W

3. Mechanical

No.	Item	Specification
1	Cable	
2	Connector	N female
3	Size	220*17*6.5cm
4	Weight-Kg	8.5