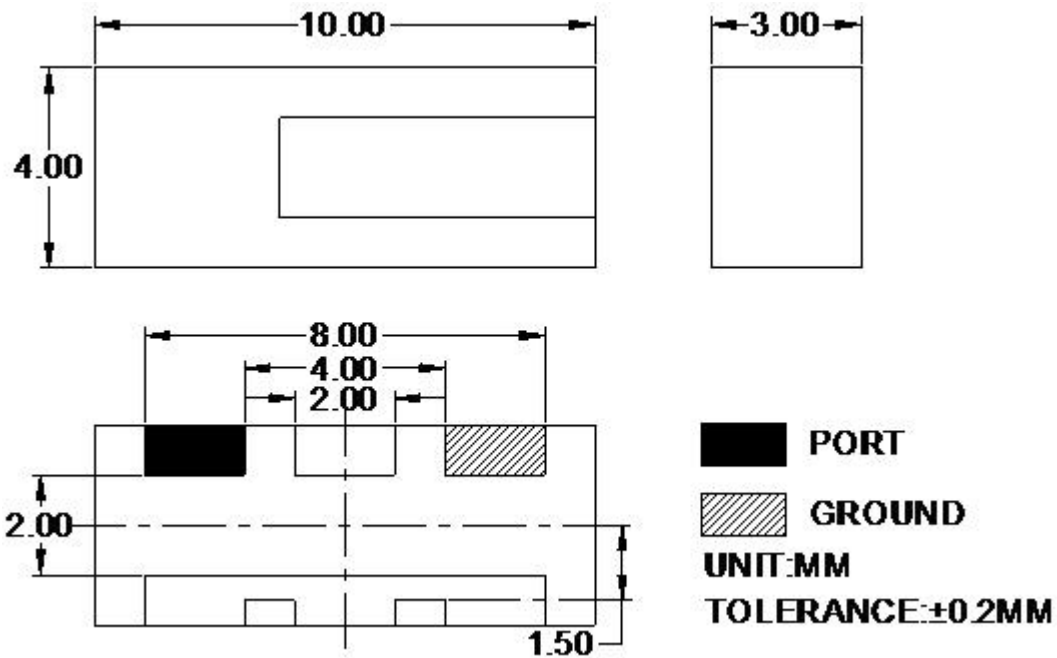


GPS Chip Antenna

Part Number: VTCGPSA-1



1. Mechanical Drawing



2. Electrical Characteristics

Fom1

No.	Item	Specifications
1	Frequency (MHz)	1575.42±3 MHz
2	VSWR	1.5:1 (depends on the special environment)
3	Bandwidth @ 10dB Return loss	≥20 MHz(depends on the special environment)
4	Average Gain	- 4.5 dBic
5	Peek Gain	1.5 dBic
6	Ground plane	50 x 100 mm

V.TORCH

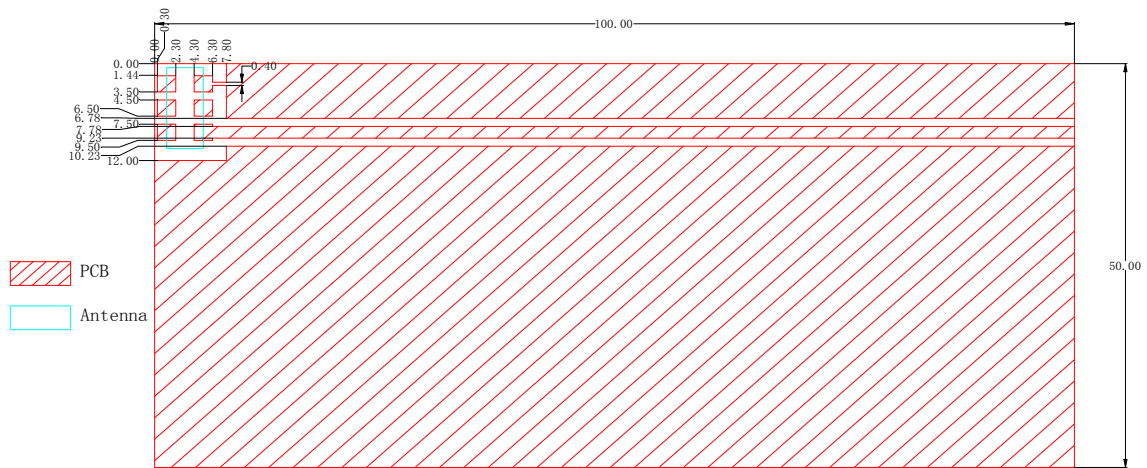
7	Polarization	Linear
8	Impedance	50 Ω

3.Environmental Characteristics

Fom2

No.	Item	Specification
1	Environmental Operating Temperature	-40 ~ +105°C
2	Environmentally Friendly	ROHS Compliant

4.Test Board



5.Recommended PCB Layout

