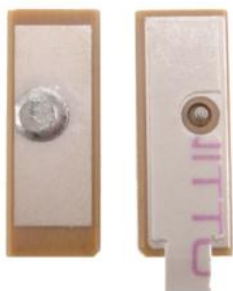
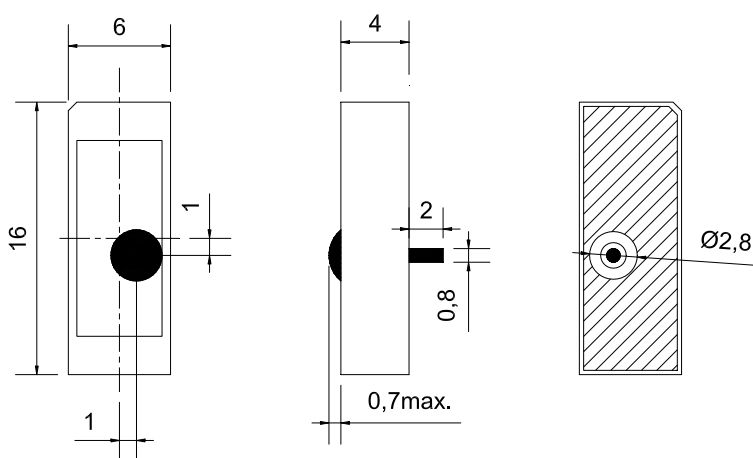


## GPS Ceramic Patch Antennas

Part Number: VTCA1575R1664A



### 1. Mechanical Drawing



Tolerance Unless Otherwise Specified:  $\pm 0.30$   
Unit: mm

### 2. Electrical Characteristics

Fom1

No.	Item	Specifications
1	Frequency (MHz)	1575.42 $\pm$ 3 MHz
2	Return Loss @ F0	$\geq 15$ dB
3	VSWR	1.5:1 (depends on the special environment)
4	Gain@ Zenith	-3.0 dBi typ.
5	Polarization	Linear Polarization
6	Impedance	50 $\Omega$

# V.TORCH

## 3.Environmental Characteristics

Fom2

No.	Item	Specification
1	Environmental Operating Temperature	-40 ~ +105°C
2	Frequecy Temperature Coefficient	±20 ppm/°C
3	Environmentally Friendly	ROHS Compliant

## 4.Test Board

