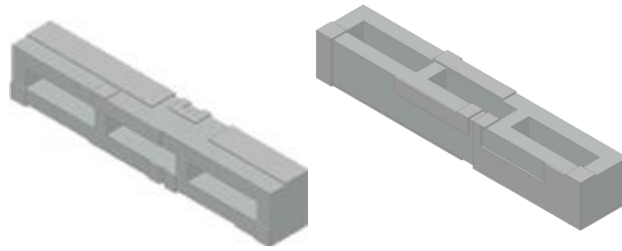
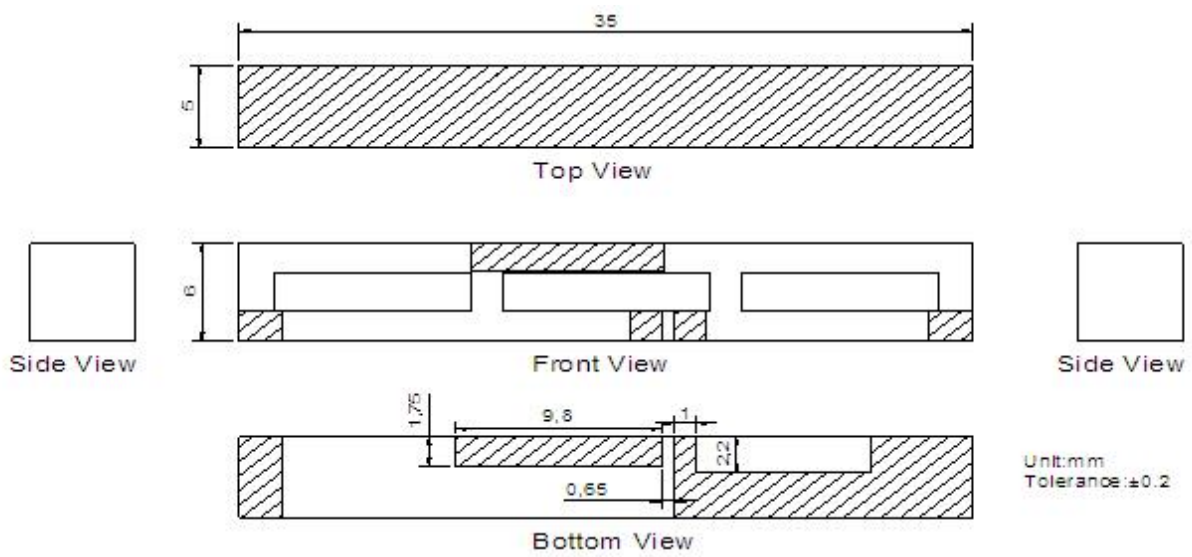


GSM/3G Chip Antenna

Part Number: VTCGSMA-1



1. Mechanical Drawing



2. Electrical Characteristics

Fom1

No.	Item	Specifications
1	Frequency (MHz)	824-960MHz & 1700-2170MHz
2	Return Loss	≥6 dB(depends on the special environment)
3	Gain	1.3 dBi typ. @ 824-960MHz 2.3 dBi typ. @ 1700-2170MHz
4	Ground plane	40 x 95 mm
5	Polarization	Linear
6	Impedance	50 Ω

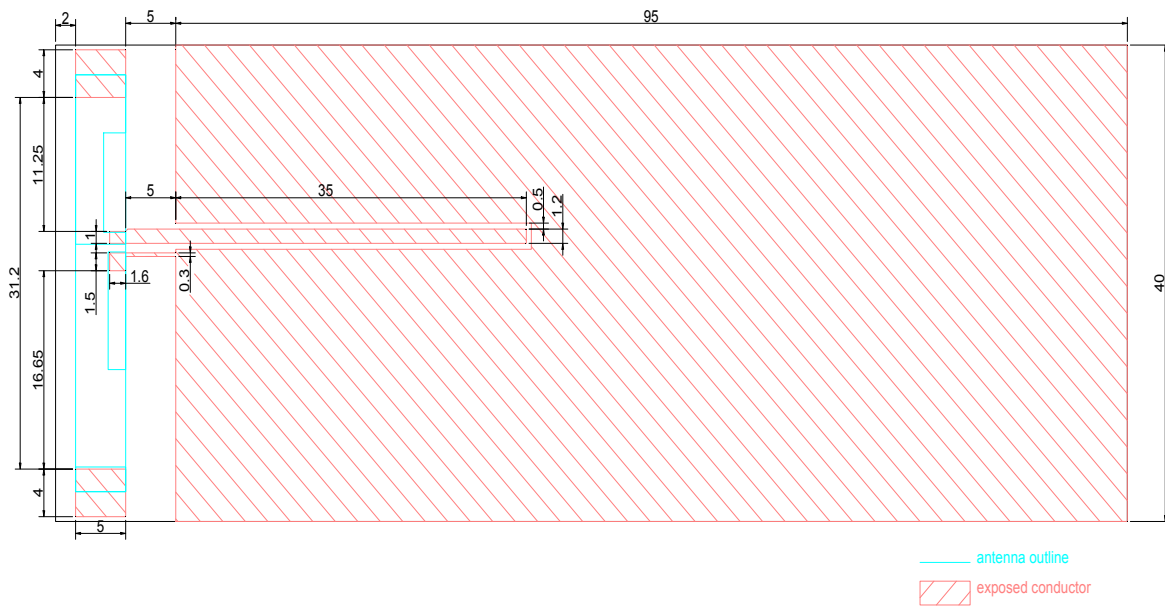
V.TORCH

3.Environmental Characteristics

Fom2

No.	Item	Specification
1	Environmental Operating Temperature	-40 ~ +105°C
2	Environmentally Friendly	ROHS Compliant

4.Test Board



5.Recommended PCB Layout

