

## 2.4GHz Flat Panel Antenna

### VT2.4G-FPA-1



#### Applications

- 2.4 ISM Band
- 2.4GHz Spread Spectrum Communications

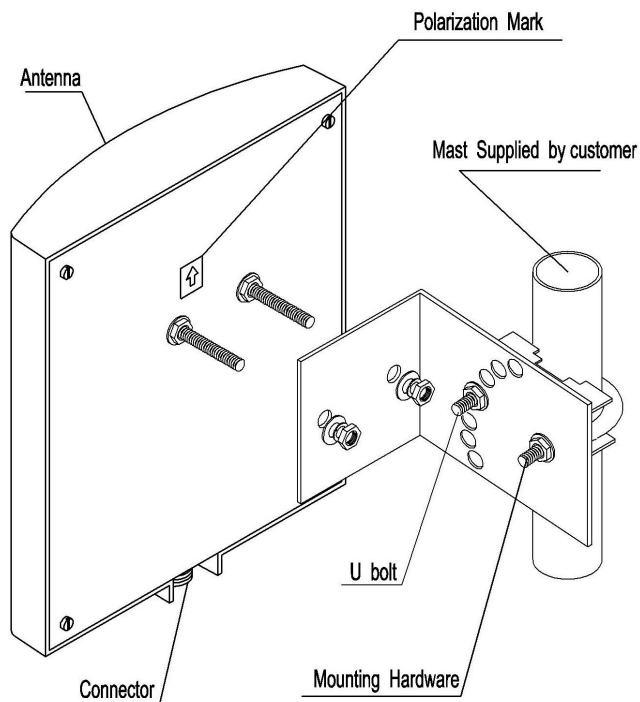
#### System

- WiFi System
- Point to Point or Point to Multipoint System

#### Features

- Low VSWR
- Compact Size, Good Appearance
- All Weather Operation
- Designed by Broadband Technology

### 1.Installation Sketch



## 2. Electrical Characteristics

No.	Item	Specifications
1	Frequency Range-MHz	2400-2483Mhz
2	Bandwidth-Mhz	83
3	Gain-dBi	12
4	Vertical Beamwidth-°	35
5	Horizontal Beamwidth-°	35
6	VSWR	≤1.5
7	Impedance	50 Ω
8	Polarization	Vertical
9	Max power	50W

## 3. Mechanical Characteristics

No.	Item	Specification
1	Cable	---
2	Connector	N Female or Customized
3	Size	220*190*45mm
4	Weight-g	0.8
5	Pole Diameter-mm	≤φ50