

2.4GHz Broadband Flat Antenna

VT2.4G-BFA-1



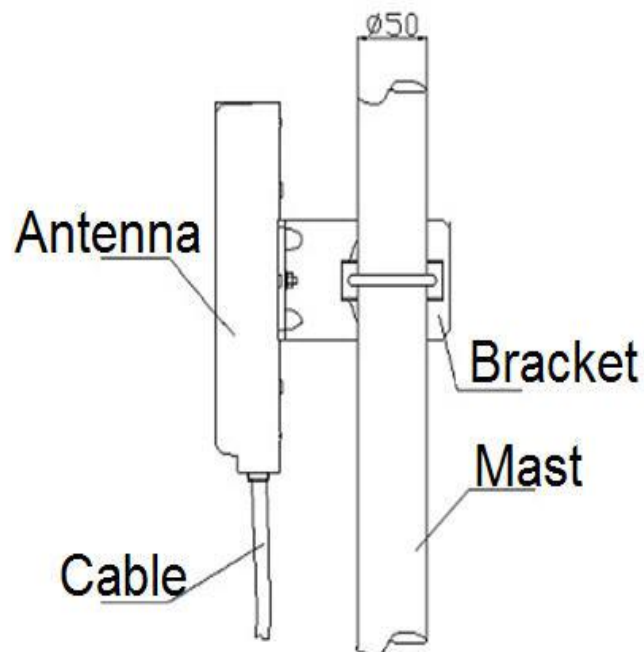
Applications

- 2.4 GHz ISM band
- 2.4 GHz WLAN system
- WiFi system
- Point to point & Point to multipoint

Features

- Medium gain, low VSWR
- Compact size, good appearance
- Strong adaptability of environment
- Design by broadband technique
- DC grounded

1.Installation Sketch

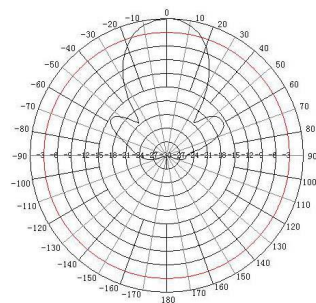


2. Electrical Characteristics

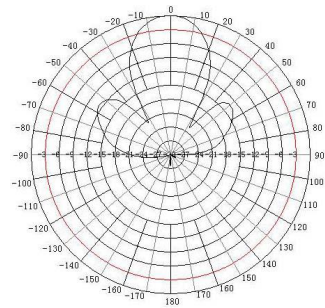
No.	Item	Specifications
1	Frequency Range-MHz	2300-2700Mhz
2	Bandwidth-Mhz	400
3	Gain-dBi	14
4	Vertical Beamwidth-°	25
5	Horizontal Beamwidth-°	30
6	VSWR	≤1.5
7	Impedance	50 Ω
8	Polarization	Vertical
9	Max power	50W

3. Mechanical Characteristics

No.	Item	Specification
1	Cable	---
2	Connector	SMA Male
3	Size	225*195*45mm
4	Weight-g	1.3
5	Mast Diameter-mm	Φ50



H Plane



E Plane