

## Fiberglass Omni Antenna

### VT2.4G-FOA-8



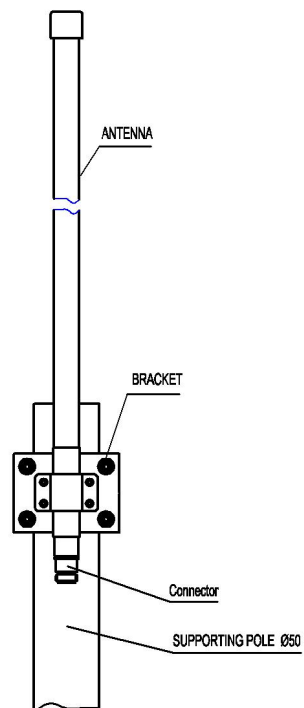
#### Applications

- 2.4 GHz WLAN System
- 2.4 GHz ISM Band
- WiFi System
- Point to Multi-point

#### Features

- High Gain, Broad Band
- High Quality Fiberglass Radome
- All Weather Operation
- Supplied with Mast Mounting Kit

#### 1. Installation Sketch



## 2.Electrical Characteristics

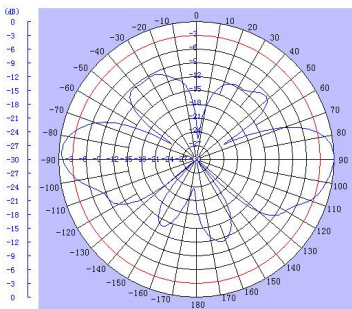
Form 1

No.	Item	Specifications
1	Frequency Range-MHZ	2400-2483MHZ
2	Beamwidth-MHZ	83
3	Polarization	Vertical
4	Gain-dBi	5
5	Beamwidth-°	E:30 H:360
6	VSWR	≤1.5
7	Impedance	50 Ω
8	Max power	100w

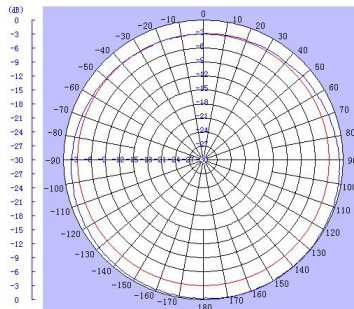
## 3.Mechanical Characteristics

Form 2

No.	Item	Specification
1	Connector	N Female or N Male
2	Dimension-mm	0.30
3	Weight-Kg	0.5
4	Mast Diameter-mm	φ 40~50mm



E Plane



H Plane