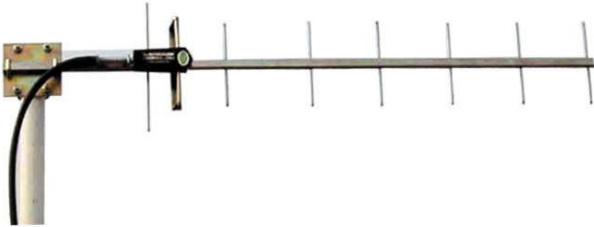


## YaGi Antenna

Part Number: VT900-YG-1

### Applications

- CDMA/GSM/RFID System
- Repeater Station or Long Distance terminal
- Highway or tunnel coverage or long distance receive



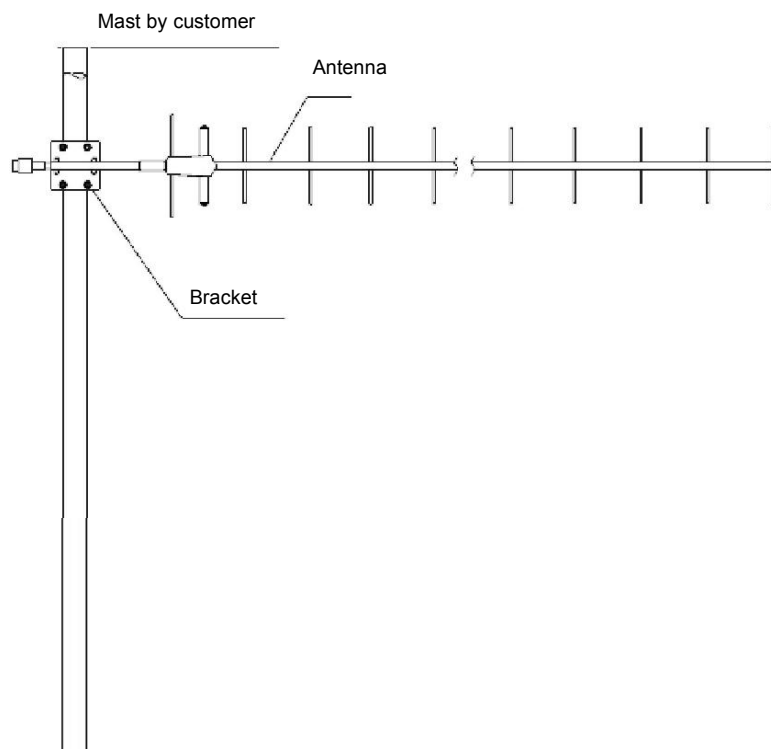
Note: The picture is for reference only, please kindly consult with the real product.

### Features

- High Gain, Low VSWR
- Stainless Steel, Strong corrosion resistance
- Compatible with Vertical or Horizontal Polarization

Polarization

### 1. Installation Sketch



1. Let the antenna face to the communication direction
2. Adjust antenna azimuth to make the signal maximum, and then tighten the screws
3. Wrap the connector with waterproof tape.

# V.TORCH

## 2. Electrical Characteristic

No.	Item	Specifications
1	Frequency Range-MHz	806~960MHZ
2	Bandwidth-°MHZ	70
3	Beamwidth-°	E:32 H:36
4	F/B Ratio-dB	≥18
5	Gain-dB	12
6	VSWR	≤2
7	Impedance	50 Ω
8	Max.Power-W	100
9	Polarization	Vertical

## 3. Mechanical Characteristic

No.	Item	Specification
1	Cable	-----
2	Connector	N Female or customized
3	Length-m	1.43
4	Mast Diameter-mm	Φ40-50
5	Weight-Kg	1.1