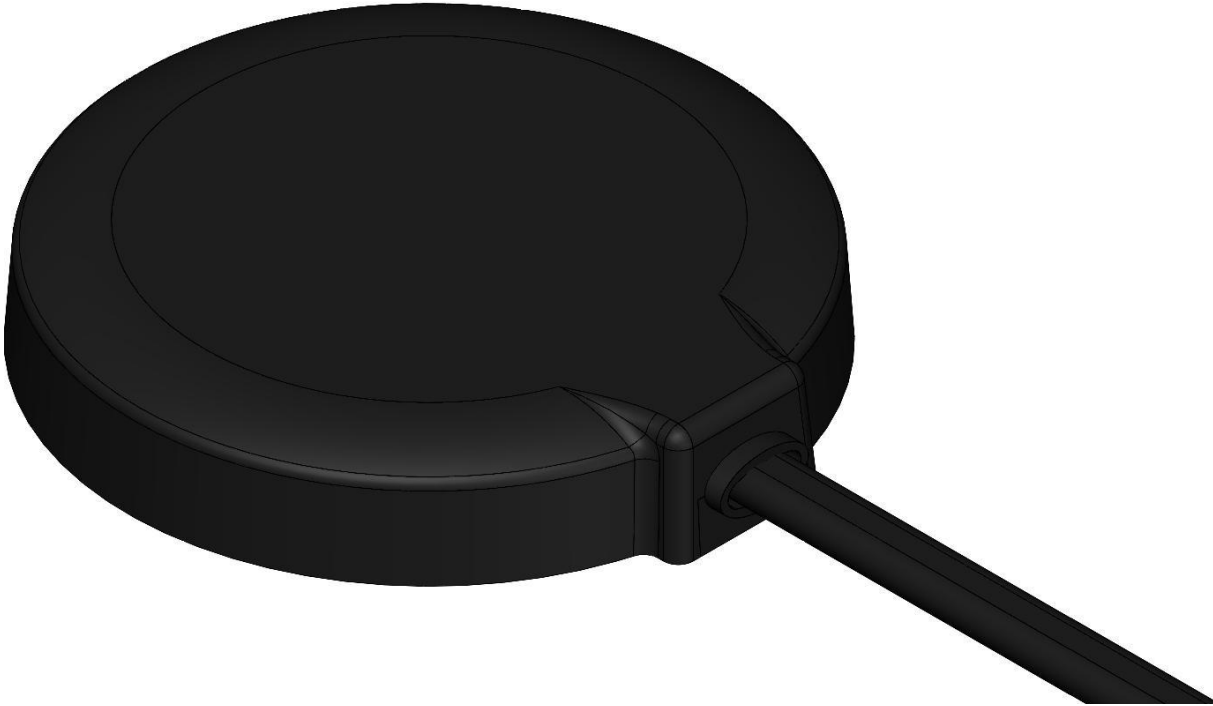
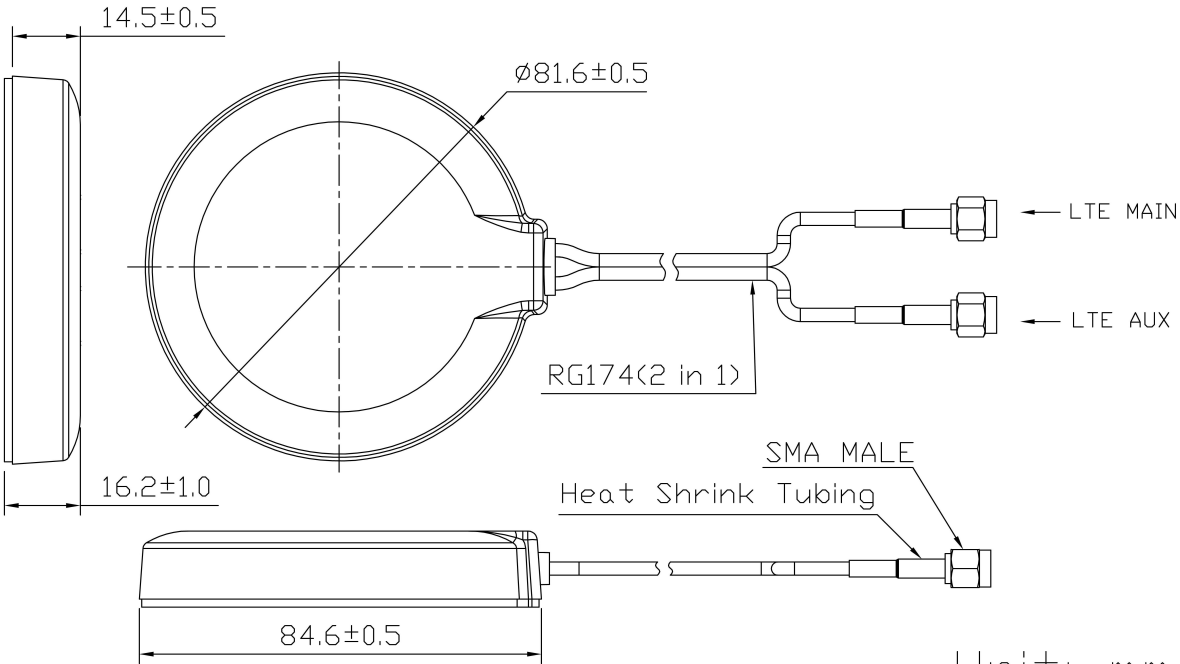


LTE MIMO Combination Antenna VTM3LM-2



DIMENSIONS

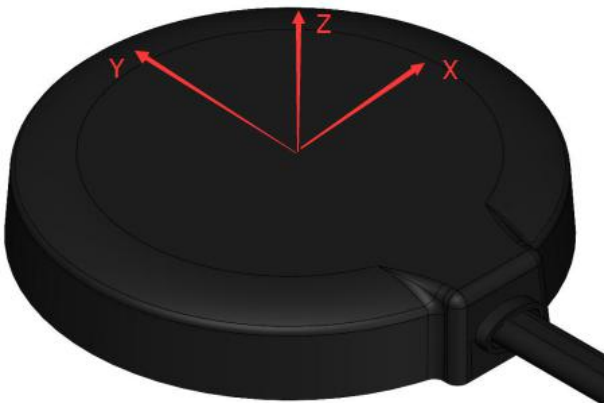


Unit: mm

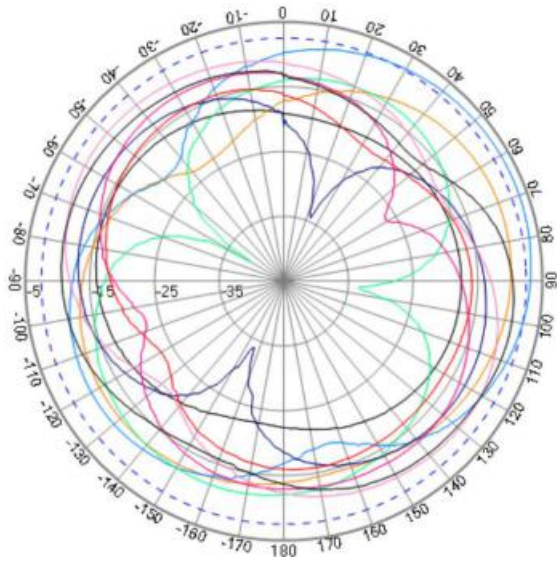
SPECIFICATIONS

Item		Specifications
LTE Antenna MAIN	Frequency Range	698~960MHz/1710~2690MHz
	V.S.W.R	<3.0
	Polarization	Linear
	Gain	2.5dBi (Zenith)
	Impedance	50Ω
LTE Antenna AUX	Frequency Range	698~960MHz/1710~2690MHz
	V.S.W.R	<3.0
	Polarization	Linear
	Gain	2.0dBi (Zenith)
	Impedance	50Ω
Mechanical	Cable	RG174
	Connector	SMA/FAKRA or others
	Material	ABS
	Mounting Method	Adhesive/Magnet
Environmental	Operating Temperature	-40°C~+85°C
	Relative Humidity	Up to 95%
	Ingress Protection	IP67
	Vibration	10 to 55Hz with 1.5mm amplitude 2hours
	Environmentally Friendly	ROHS Compliant

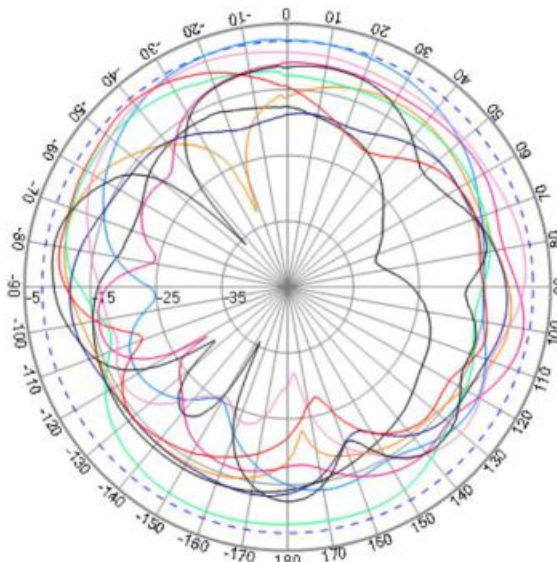
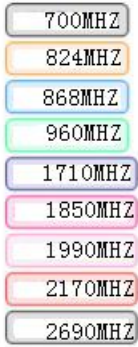
Radiation Pattern



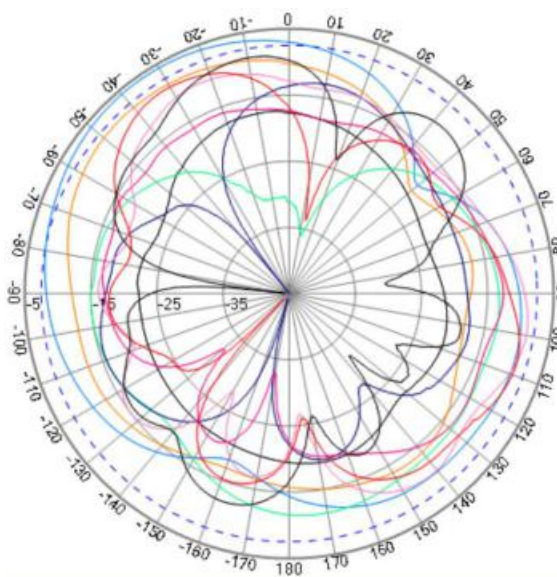
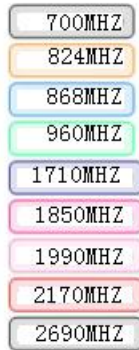
LTE Antenna MAIN



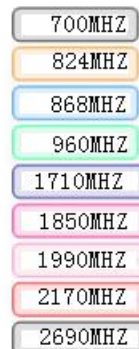
XY PLANE



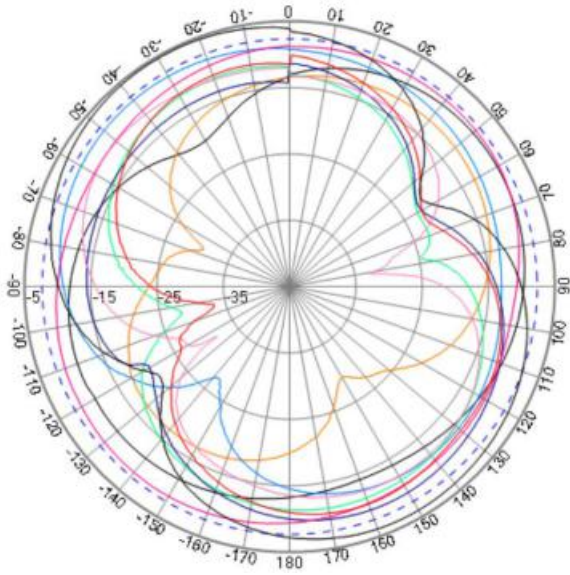
XZ PLANE



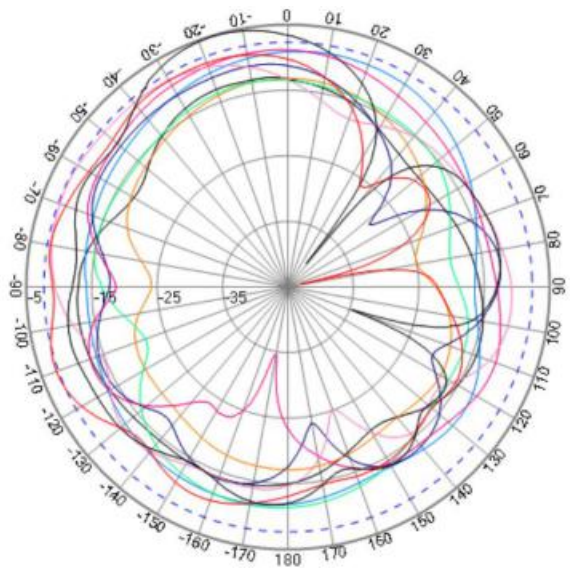
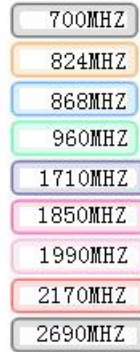
YZ PLANE



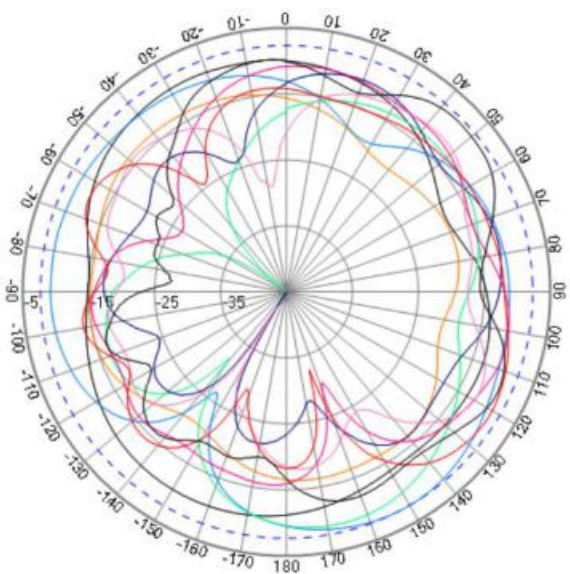
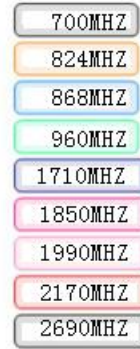
LTE Antenna AUX



XY PLANE



XZ PLANE



YZ PLANE

