

## 2G/3G/WLAN/LTE Panel Antenna

### VTGMWLP-1



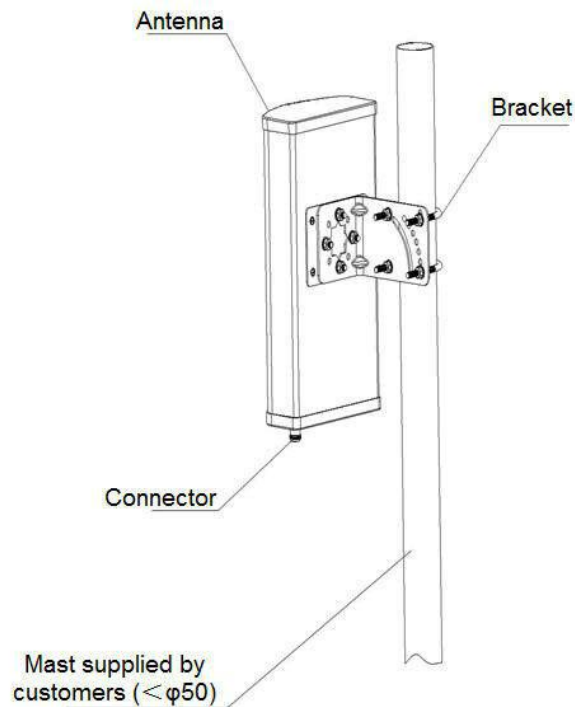
#### Applications

- 2G/3G/WLAN/LTE
- 698~960/1710~2700MHz band
- TDD / FDD-LTE Indoor coverage system

#### Features

- Broad band, Cover 698~2700MHz common system
- Light weight, Small size
- UV stable ABS radome

#### 1.Installation Sketch



## 2.Electrical Characteristics

No.	Item	Specifications	
1	Freq.Range-MHz	698-960	1710-2700
2	Typical Gain-dBi	6	8
3	Beamwidth-° (Typical value)	E:65 H:90	E:55 H:70
4	F/B-dB	8	10
5	VSWR	≤2.0	≤1.8
6	IM3-dBc(2×33dBm)	-140	
7	Impedance-Ω	50	
8	Polarization	Vertical	
9	Max.Power-W	50	

## 3.Mechanical Characteristics

No.	Item	Specification
1	Cable	---
2	Connector	N female
3	Size	300×164×85mm
4	Weight-Kg	1.2
5	Mounting	Hold rod installation